

# Statewide Landscape Scan of ACEs/TIC Related Efforts

## Chapter 3: Trauma-Informed Training Inventory

## Statewide Landscape Scan: Table of Contents

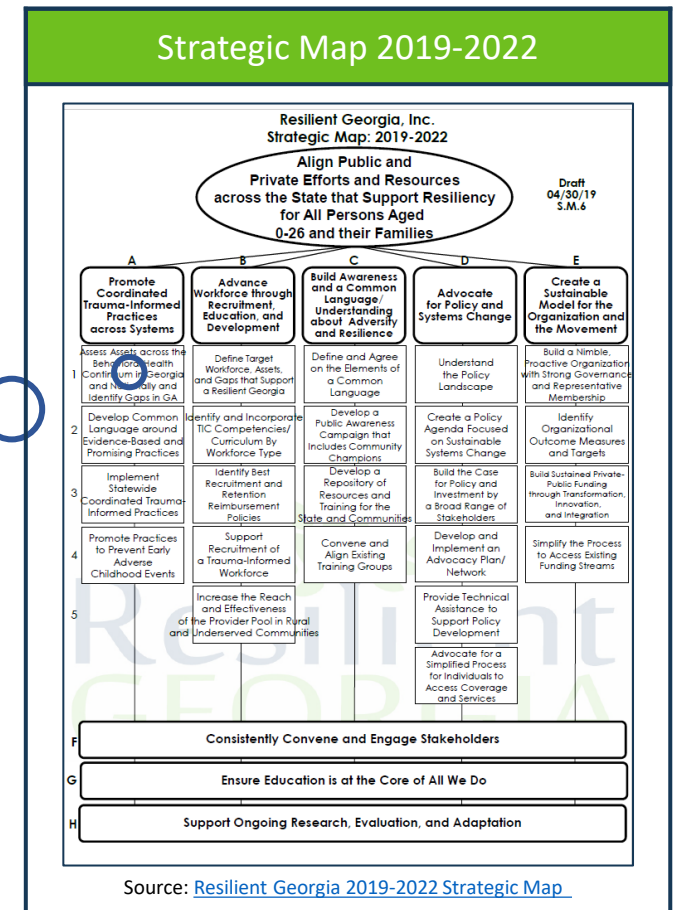
<u>Topic</u>	<u>Chapter</u>
• TIC/ACEs Peer Reviewed Publications Literature Review	1
• Overview of Behavioral Health Services & Workforce Distribution	2
• Statewide Landscape Scan ACEs/TIC Related Efforts By Sector <ul style="list-style-type: none"><li>• Community &amp; Faith-based Efforts</li><li>• Local &amp; Regional Coalitions</li></ul>	2
• Trauma-Informed Training Inventory	3
• Statewide Landscape Scan ACEs/TIC Related Efforts By Sector (continued) <ul style="list-style-type: none"><li>• Out of School</li><li>• School &amp; College Based</li></ul>	4
• Statewide Landscape Scan ACEs/TIC Related Efforts By Sector (continued) <ul style="list-style-type: none"><li>• State Departments</li><li>• Other Key Partner Organizations</li></ul>	5

# Statewide Landscape Scan: Project Objectives

Conduct a descriptive audit of all programs across Georgia that aim to prevent or reduce adverse childhood experiences (ACEs) and deliver trauma informed care (TIC) to 0 to 26 year old's to help Resilient Georgia –

- Recognize leading examples and facilitate sharing of best practices across partners
- Identify gaps in services and enable building capacity in those areas with its partners
- Inform planning and development of new, integrated and innovative efforts with its partners

Strategy A1 “Assess Assets across the Behavioral Health Continuum in Georgia and Nationally and Identify Gaps in GA”



# Trauma Informed Training Inventory: Initial Knowledge Sharing Discussion

- In **December 2019**, Resilient Georgia convened **75+ attendees from multiple partner and stakeholder organizations** for a General Meeting. Our General Meetings serve not only to get information to our stakeholders and partners, but, more importantly, to get feedback and information from our stakeholders and partners
- Attendees were divided into 6 breakout groups and **knowledge of trauma trainings across Georgia was crowdsourced** from all in attendance - subject matter experts, seasoned practitioners & field specialists working in children’s behavioral health from the public, private and non-profit sectors
- The preliminary inventory of trauma trainings gathered at the meeting was used to start building out a Trauma Informed Training Roadmap excel database for Georgia

**Trauma Informed Training Roadmap Excel Database**

RESILIENT GEORGIA  
Training Road Map to Trauma-Informed Systems

1: TRAUMA AWARE  
2: TRAUMA SENSITIVE  
3: TRAUMA RESPONSIVE  
4: TRAUMA INFORMED

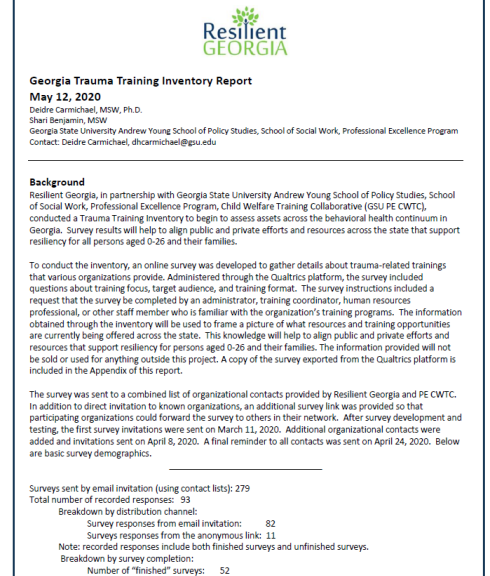
First Responder	Health Clinic/Hospital	School	Juvenile Justice	Public Health/ Social Services	Early Childhood Education	Parents/ Caregiver	Community	Youth Serving Organization	Faith	Businesses	Youth
<a href="#">Online Trauma/Brain 101</a>	<a href="#">Online Trauma/Brain 101</a>	<a href="#">Online Trauma/Brain 101</a>	<a href="#">Online Trauma/Brain 101</a>	<a href="#">Online Trauma/Brain 101</a>	<a href="#">Online Trauma/Brain 101</a>	<a href="#">Online Trauma/Brain 101</a>	<a href="#">Online Trauma/Brain 101</a>	<a href="#">Online Trauma/Brain 101</a>	<a href="#">Online Trauma/Brain 101</a>	<a href="#">Online Trauma/Brain 101</a>	<a href="#">Online Trauma/Brain 101</a>
<a href="#">Trauma 101 Understanding the Impact of Trauma on Children</a>	<a href="#">Trauma 101 Understanding the Impact of Trauma on Children</a>	<a href="#">Trauma 101 Understanding the Impact of Trauma on Children</a>	<a href="#">Trauma 101 Understanding the Impact of Trauma on Children</a>	<a href="#">Trauma 101 Understanding the Impact of Trauma on Children</a>	<a href="#">Trauma 101 Understanding the Impact of Trauma on Children</a>	<a href="#">Trauma 101 Understanding the Impact of Trauma on Children</a>	<a href="#">Trauma 101 Understanding the Impact of Trauma on Children</a>	<a href="#">Trauma 101 Understanding the Impact of Trauma on Children</a>	<a href="#">Trauma 101 Understanding the Impact of Trauma on Children</a>	<a href="#">Trauma 101 Understanding the Impact of Trauma on Children</a>	<a href="#">Trauma 101 Understanding the Impact of Trauma on Children</a>
<a href="#">Brain 101 Understanding the Impact of Trauma on Brain Development</a>	<a href="#">Brain 101 Understanding the Impact of Trauma on Brain Development</a>	<a href="#">Brain 101 Understanding the Impact of Trauma on Brain Development</a>	<a href="#">Brain 101 Understanding the Impact of Trauma on Brain Development</a>	<a href="#">Brain 101 Understanding the Impact of Trauma on Brain Development</a>	<a href="#">Brain 101 Understanding the Impact of Trauma on Brain Development</a>	<a href="#">Brain 101 Understanding the Impact of Trauma on Brain Development</a>	<a href="#">Brain 101 Understanding the Impact of Trauma on Brain Development</a>	<a href="#">Brain 101 Understanding the Impact of Trauma on Brain Development</a>	<a href="#">Brain 101 Understanding the Impact of Trauma on Brain Development</a>	<a href="#">Brain 101 Understanding the Impact of Trauma on Brain Development</a>	<a href="#">Brain 101 Understanding the Impact of Trauma on Brain Development</a>

Source: Trauma Informed Training Roadmap Excel Database Screenshot

# Trauma Informed Training Inventory: Follow-Up Survey Approach

- Resilient Georgia, in partnership with **Georgia State University Andrew Young School of Policy Studies, School of Social Work, Professional Excellence Program Child Welfare Training Collaborative**, conducted a **widespread trauma training inventory in March-April 2020** to begin to assess assets across the behavioral health continuum in Georgia
- An **online survey** was developed to gathered details about **trauma-related trainings** that various organizations provide, and included questions about **training focus, target audience, and training format**
- Survey instructions included a request that the survey be completed by an administrator, training coordinator, human resources professional, or other **staff member who is familiar with the organization's training programs**
- The **survey was shared widely amongst Resilient Georgia partners**. In addition to direct invitation to known organizations, participating organizations **could forward the survey to others in their network**

## Trauma Training Inventory Report

A screenshot of a report titled "Georgia Trauma Training Inventory Report" dated May 12, 2020. The report is from Resilient Georgia and the Georgia State University Andrew Young School of Policy Studies. It includes a background section explaining the purpose of the survey, which was to assess assets across the behavioral health continuum in Georgia. The report also includes a breakdown of survey responses by distribution channel and survey completion status.

**Georgia Trauma Training Inventory Report**  
May 12, 2020  
Deidre Carmichael, MSW, Ph.D.  
Sheri Benjamin, MSW  
Georgia State University Andrew Young School of Policy Studies, School of Social Work, Professional Excellence Program  
Contact: Deidre Carmichael, [dcarmichael@gsu.edu](mailto:dcarmichael@gsu.edu)

**Background**  
Resilient Georgia, in partnership with Georgia State University Andrew Young School of Policy Studies, School of Social Work, Professional Excellence Program, Child Welfare Training Collaborative (GSU PE CWTC), conducted a Trauma Training Inventory to begin to assess assets across the behavioral health continuum in Georgia. Survey results will help to align public and private efforts and resources across the state that support resiliency for all persons aged 0-26 and their families.

To conduct the inventory, an online survey was developed to gather details about trauma-related trainings that various organizations provide. Administered through the Qualtrics platform, the survey included questions about training focus, target audience, and training format. The survey instructions included a request that the survey be completed by an administrator, training coordinator, human resources professional, or other staff member who is familiar with the organization's training programs. The information obtained through the inventory will be used to frame a picture of what resources and training opportunities are currently being offered across the state. This knowledge will help to align public and private efforts and resources that support resiliency for persons aged 0-26 and their families. The information provided will not be sold or used for anything outside this project. A copy of the survey exported from the Qualtrics platform is included in the Appendix of this report.

The survey was sent to a combined list of organizational contacts provided by Resilient Georgia and PE CWTC. In addition to direct invitation to known organizations, an additional survey link was provided so that participating organizations could forward the survey to others in their network. After survey development and testing, the first survey invitations were sent on March 11, 2020. Additional organizational contacts were added and invitations sent on April 8, 2020. A final reminder to all contacts was sent on April 24, 2020. Below are basic survey demographics.

Surveys sent by email invitation (using contact lists): 279  
Total number of recorded responses: 93  
Breakdown by distribution channel:  
Survey responses from email invitation: 82  
Survey responses from the anonymous link: 11  
Note: recorded responses include both finished surveys and unfinished surveys.  
Breakdown by survey completion:  
Number of "finished" surveys: 52

Source: [Trauma Training Inventory Report](#) Screenshot

Please see [Trauma Training Inventory Report](#) for additional survey details & a copy of the survey

## Trauma Informed Training Inventory: Key Survey Results

- **279 surveys were sent out** by direct invitation, and **93 total responses** were recorded
- **Eighty-two percent** of respondents reported that **their organization provides or sponsors training on the topic of trauma**
- Most (**29%**) of the trainings were categorized as **general trauma-informed care** (basics about trauma and its impact). The **second highest reported focus was trauma resiliency and recovery (21%)**, followed by **specific trauma focused therapies/interventions at 13%**
- **Professionals (individuals working in a professional capacity with adults, children, families, or communities)** were the target audience for the majority (**72%**) of the training programs reported. Only **28% of the programs** reported were **targeted toward community members** (the general public to include individuals reached through social, civic, fraternal, education, or religious organizations)

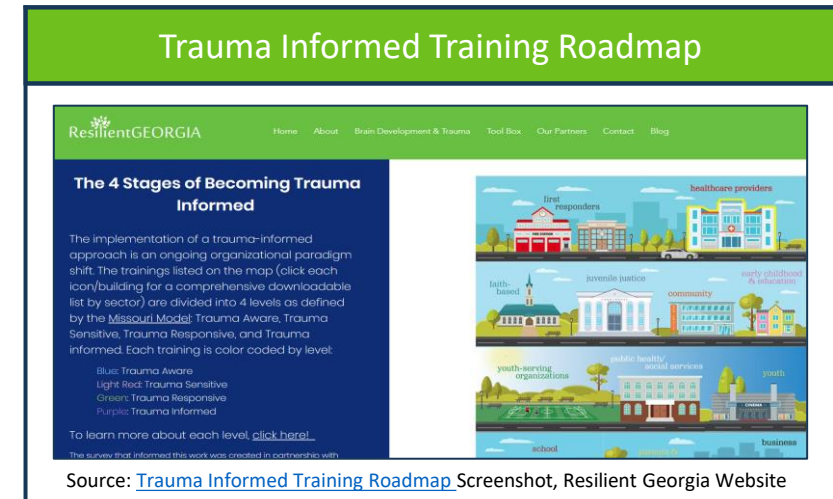


Source: Trauma Training Inventory Report

Please see [Trauma Training Inventory Report](#) for additional survey results

## Final Deliverable: Trauma Informed Training Roadmap

- Both the initial trauma trainings knowledge sharing discussion and trauma informed training inventory survey results were used to frame a picture of what trauma-informed resources and training opportunities are currently being offered across the state
- [Resilient Georgia’s Education and Training Committee](#) worked diligently with our partners to develop a [Trauma Informed Training Road Map](#) that highlights and promotes the myriad trainings being implemented across the state to create a trauma informed Georgia
- The trainings in the roadmap are **divided into 4 levels** as defined by the [Missouri Model](#): **Trauma Aware, Trauma Sensitive, Trauma Responsive, and Trauma informed**, and further categorized by **12 audience sectors**:
  - [Healthcare Providers](#)
  - [Early Childhood & Education](#)
  - [Youth Serving Organizations](#)
  - [First Responders](#)
  - [Parents and Caregivers](#)
  - [Juvenile Justice](#)
  - [Faith-Based](#)
  - [Community](#)
  - [Youth](#)
  - [School](#)
  - [Public Health Social Service](#)
  - [Business](#)
- We continue to **actively promote the roadmap** to various **priority sectors statewide**, and help **Resilient Georgia’s Regional Grantees** to **plan, implement & promote these training opportunities across rural & urban counties**



Please visit [our website](#) to further explore the [Trauma Informed Training Road Map](#)